

PRINCIPAL APPLICATIONS

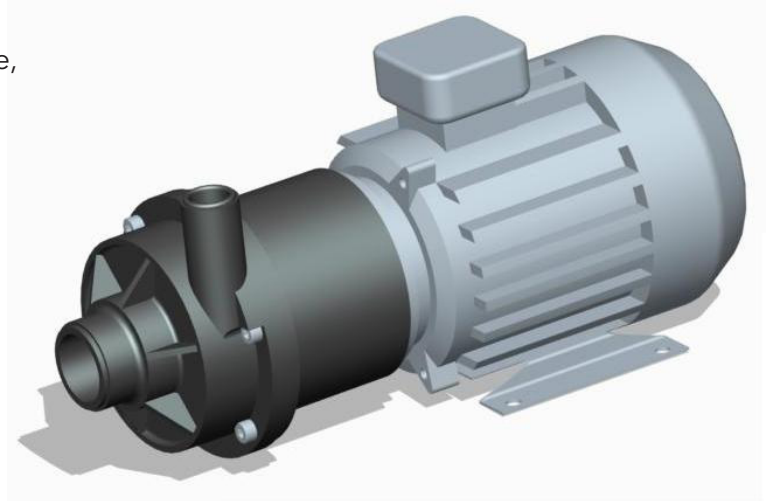
For heavy duty applications requiring safe, leak-free, continuous flow of aggressive chemicals, acids, solvents, alkalis, sterile and chilled fluids.

WETTED MATERIALS

- Standard EPDM O Ring, Viton optional
- PP encapsulated magnet, PVDF optional
- PP pump housing, PVDF optional
- PPS spindle housing, PVDF and PP optional
- Alumina ceramic spindle & thrust washers
- Graflon bushes, Rulon optional

FEATURES

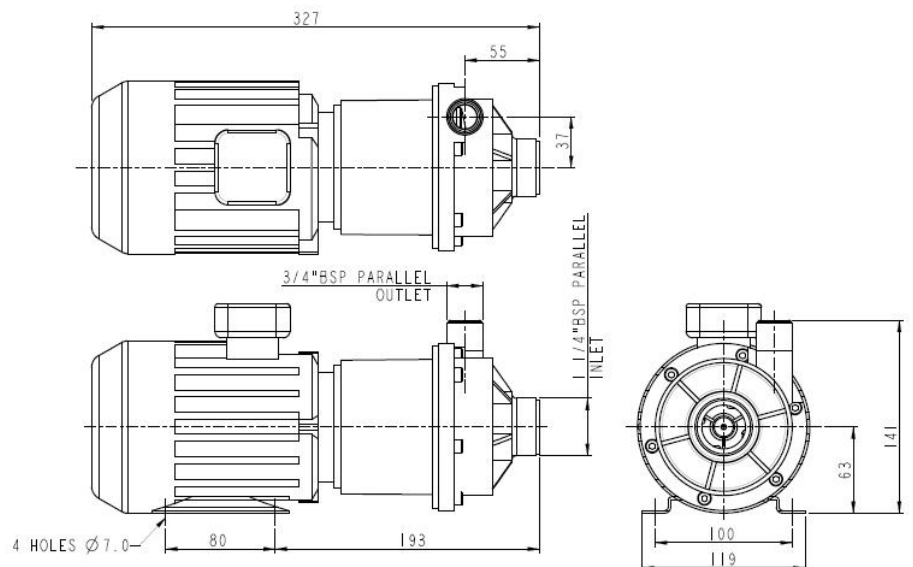
- Manufactured in chemical resistant thermo-plastics - entirely non-metallic
- Magnetic couplings provide an energy efficient thermal shield, minimising heat transfer to the pumped fluid
- IP55 standard motor housing
- High SG versions available



3 PHASE IEC MOTOR
REQUIRED 0.25KW
230/400-3-50/60 B3/B14
FOOT & FACE

DIMENSIONS

Drawings not to scale
Dimensions in millimetres

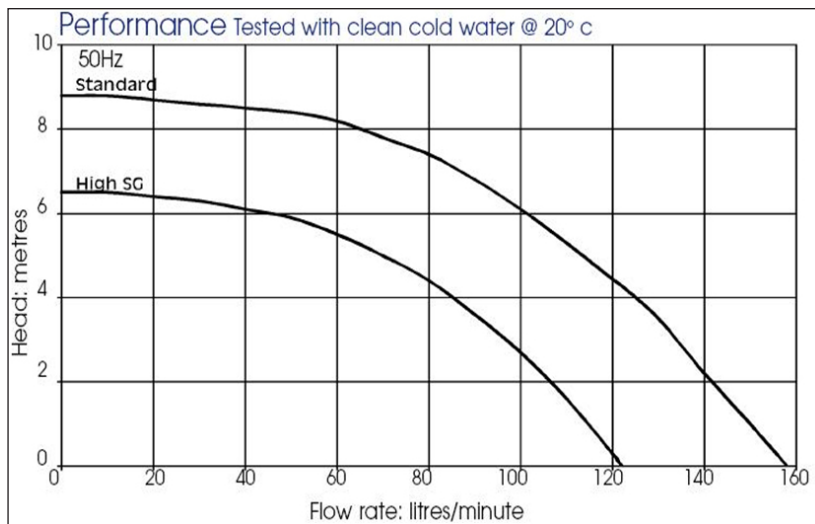


SPECIFICATION

| Model | Overall height (mm) | Overall length (mm) | Overall width (mm) | Weight (kg) | Max body pressure (bar) | Run-out flow rate (l/min) | Closed valve head (m) | Temp range (degC) | *Max specific gravity | Motor output (watts) |
|-----------|---------------------|---------------------|--------------------|-------------|-------------------------|---------------------------|-----------------------|-------------------|-----------------------|------------------------|
| NEMP160/9 | 141 | 327 | 119 | 5.6 | 1.7 | 158 | 8.8 | -20 to +85 | 1.2 | 180 (1Ph) 250 (3Ph) |

*Assuming maximum viscosity of 30cp.

PERFORMANCE



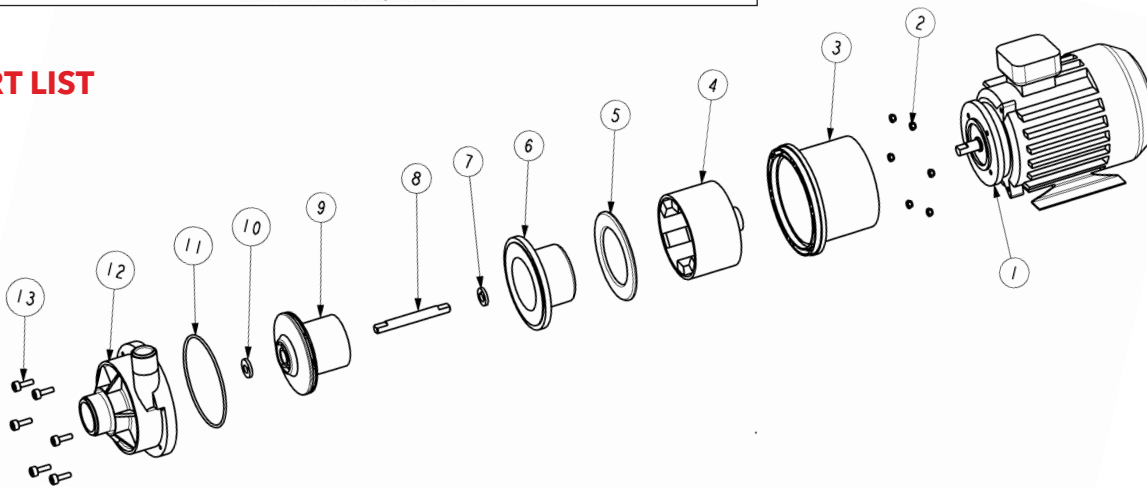
NOTE: These magnetically coupled pumps are designed for use with clean fluids.

Solids will cause jamming. Abrasives will reduce pump life and invalidate the warranty.

NEMP pumps are not self priming and are not designed to run dry.

The company reserves the right to change specifications.

PART LIST



| Item Number | Description | Quantity | Part Number | | | |
|-------------|-----------------|----------|------------------------------|-------------------------------|----------------------------------|---|
| | | | 008857 (110V 1Ph 50Hz) | 008843 (110V 1 Ph 60Hz) | 008823 (230V 1 Ph 50/60Hz) | No longer available (400V 3 Ph 50Hz/60Hz) |
| 1 | Motor | 1 | | | | |
| 2 | Nut | 6 | 001564 | | | |
| 3 | Adaptor | 1 | 018368 | | | |
| 4 | Drive Magnet | 1 | 008624 | | | |
| 5 | Support Plate | 1 | 008295 | | | |
| 6 | Spindle Housing | 1 | 018316 (PPS) | 008302 (PVDF) | 028321 (PP) | |
| 7 | D Washer | 1 | 008298 | | | |
| 8 | Spindle | 1 | 008297 | | | |
| 9 | Impeller | 1 | 038604 (PP 50Hz) | | 018669 (PP 60Hz and High SG) | |
| | | | 018631 (PVDF 50Hz) | | 018670 PVDF 60Hz and High SG) | |
| 10 | D Washer | 1 | 008298 | | | |
| 11 | O Ring | 1 | 008276 (EPDM) | | 008217 (Viton) | |
| 12 | Pump Body | 1 | 018382 (PP) | | 008308 (PVDF) | |
| 13 | Screw | 6 | 001759 | | | |



www.ameyplastics.co.uk

T: 01730 266525
E: sales@ameyplasticsltd.co.uk

Amey Plastics, Unit 6 Amey Industrial Estate, Frenchmans Road
Petersfield, Hampshire, GU32 3AN

Warranty: All products of the company are sold, and all services of the company are offered subject to the company's warranty and terms of sale, copies of which will be furnished upon request. Details correct at time of printing. We reserve the right to change specifications without prior notice.